



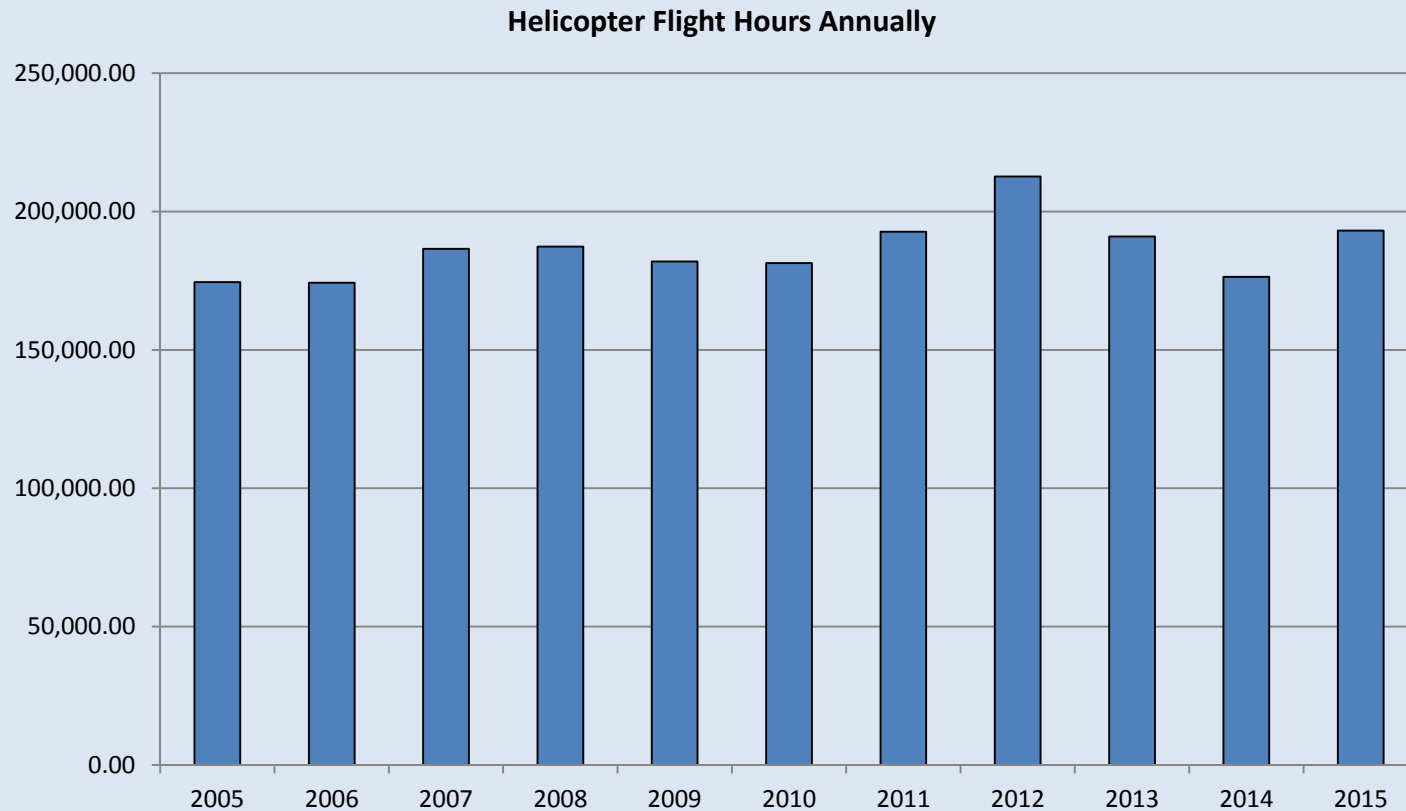
New Zealand Helicopter Safety

Paul Breuilly

Team Leader – Safety Investigations

Helicopter Activity in 2015

- Passenger transport/scenic now accounts for 46% of total hours. Up from 30% in 2011.
- Agricultural work accounts for 33%.



Safety Performance in 2015

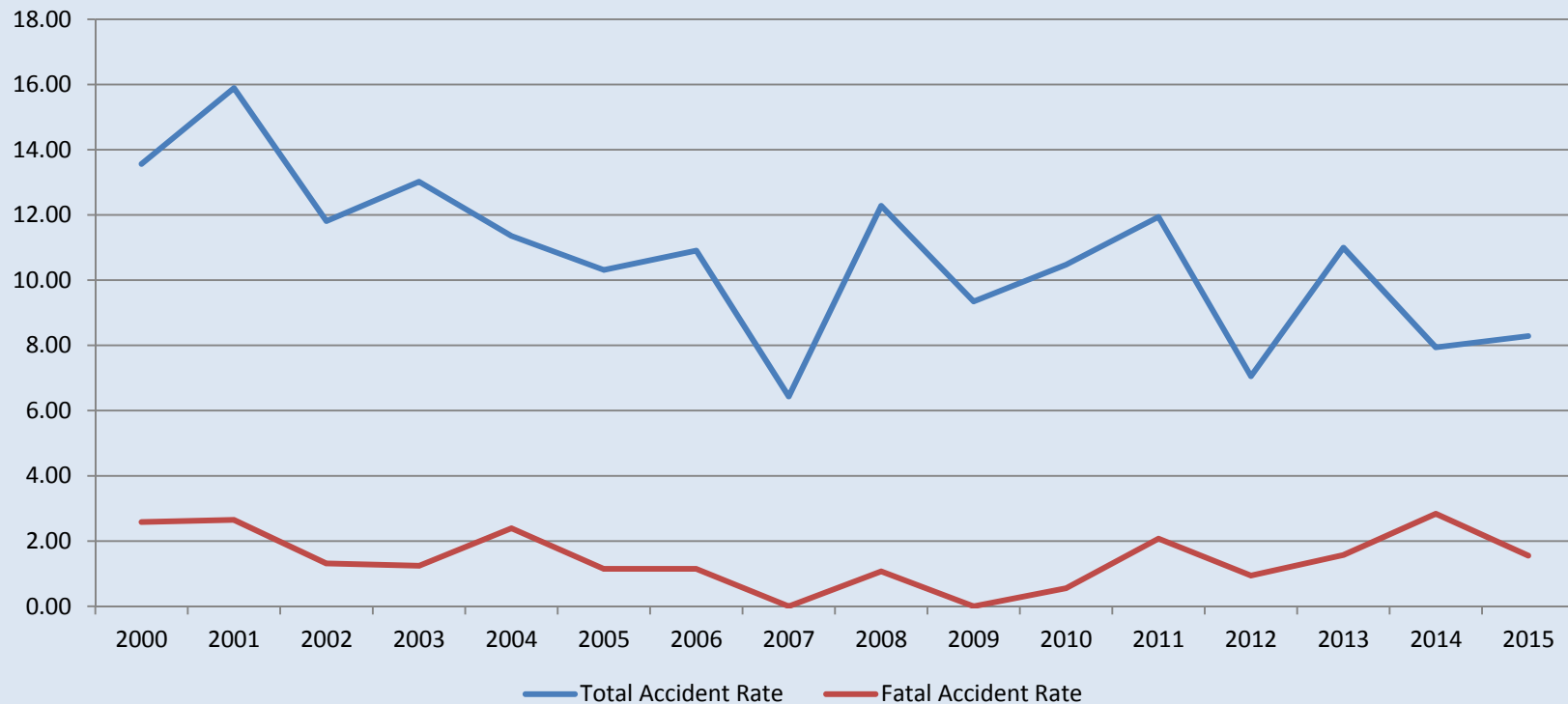
- Sixteen accidents; three of which were fatal
- 10 fatalities
- By sector:

Operation Type	Total Accidents	Fatal Accidents	Fatalities
Agricultural	4		
Airline Transport	3	1	7
Other Commercial	5	1	2
Private	4	1	1

Safety Over Time

- Over time the overall accident rate has been reducing.
- The fatal accident rate has been trending slowly upward.

Accidents & Fatal Accidents Per 100,000 Hours



Safety Over Time

- We analyzed the accidents from 2005 – 2015 ($n=193$) using the US JHSAT 'Accident by Occurrence' categories. We found similar proportions:

Accident type	Accidents
Loss of control	82
Collision/strike	29
Component/system malfunction	19
Engine power loss	13
CFIT	10
Other	8
Unknown	8
External load	7
Fuel	7
In-flight breakup	4
Landing occurrence/abnormal landing contact	4
Fire	1
Grand total	193

Safety Developments

